

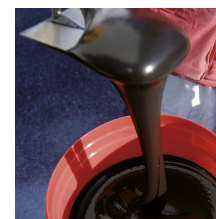


# NORDBLACK

Polymer bitumen liquid waterproofing membrane with aqueous base

CE marking:

- EN 1504-2 (C) - Principles: MC-IR



## TECHNICAL SPECIFICATIONS



## FIELD OF APPLICATION



## APPLICATIONS



## Description

NORDBLACK is a water-based bituminous waterproofing agent made up of a dispersion of elastoplastomeric polymers, bitumen, modifiers, fillers and additives.

NORDBLACK is specially formulated for creating on-site waterproofing membranes reinforced with non-woven fabric (type NYCON F).

Once cured, NORDBLACK creates a membrane featuring excellent adhesion and waterproofing properties.

## Colour

NORDBLACK is available in the black version.

## Field of application

NORDBLACK can be used in combination with non-woven fabric reinforcement (NYCON F) for:

- Foundation walls.
- Flat roofs, terraces and balconies.

NORDBLACK can be used with or without non-woven fabric reinforcement (NYCON F) for:

- Subfloors (protected, after perfect curing, with PP, PE sheets or other).

## Specific preparation of the laying support

### ► Foundations

- Eliminate any residues of release agent with a power wash.
- Eliminate the iron spacers (if any) and cover them with GROVE RAPIDO, rapid-setting fibre-reinforced mortar (see Technical Sheet).
- Skim coat any honeycombs with GROVE RAPIDO.
- Make a fillet along the edge joining the floor slab and the vertical wall using GROVE RAPIDO.

### ► Flat surfaces

- Any cement laitance present must be eliminated with milling and a power wash.
- If necessary, use GROVE PRIMER and GROVE MASSETTO to make overlays (in this case, for curing, wait 1 day for each cm of thickness).

## Preparing the product

- The product is ready-to-use.
- Before use, open the container and briefly mix the contents.

## Application of the product

NORDBLACK can be applied with a roller, scrubbing brush, trowel or block brush depending on the shape and size of the surface.

- Dip the block brush or roller into the bucket and apply a first uniform coat of the product on the laying support.

# NORDBLACK

It is important to fully cover the support until saturation.

- Without waiting too long, apply the NYCON F reinforcement on NORDBLACK while still wet and press on the fabric using a block brush or roller to aid its impregnation.
- Immediately apply a second coat of NORDBLACK above NYCON F until the surface is completely impregnated and uniformly covered.
- Wait until the next day to verify whether the reinforcement is evenly covered.
- If not, apply an additional light coat and finish without any reinforcement.

## ► Curing times

NORDBLACK cures by drying.

The waiting time for covering the waterproofing layer depends on the temperature/humidity of the atmosphere and on the support's absorbent capacity:

- 2–3 days during summer.
- roughly one week in winter.

The product can be applied at temperatures slightly above +1°C and must not be affected by frost in the first 24 hours after application.

For effective curing, guarantee a sufficient change of air in the room in which NORDBLACK was applied.

## Consumption

type of application	minimum consumption	maximum consumption	UoM	dilution
With NYCON F reinforcement	1,7	2,0	kg/m <sup>2</sup>	-
2 coats, without reinforcement	1,0	1,2	kg/m <sup>2</sup>	-

## Cleaning of tools

- Wet product: clean with water (including a power wash).
- Hardened product: remove mechanically and/or soak in solvents (acetone, nitro thinner or thinner for synthetic products).

## Useful application tips

- On very porous supports, the formation of air bubbles on the base coat of the product must be regarded as normal if there is no reinforcement.

The effect does not appear when reinforcements are used.

- The product cannot be applied with more than one reinforcement layer.
- NORDBLACK cannot be used for waterproofing of pipes for drinking or corrosive water.
- Read the Safety Sheet carefully before using the product.

## Technical data

► PRODUCT IDENTIFICATION DATA	UoM	value
Density at 23°C, EN ISO 2811-1	kg/L	1,14 ± 0,05
pH (potentiometric method) at 23°C, ISO 976	-	10 ± 1
Dry residue (at 105°C, 1 hour), ISO 3251	-	65 ± 5
Consistency	-	Semi-fluid paste
Odour	-	Slight, bitumen-like
► APPLICATION DATA AND FINAL PERFORMANCES	UoM	Value
Minimum film-forming temperature (MFFT), ISO 2115	°C	+1
Full curing time (2 coats, at 20°C)	days	7
Colour of the applied product	-	Black
Impermeability to water, EN 1928 (method A, 24 hours, 60 kPa)	-	No penetration
Consistency of the applied product	-	Elastoplastic film
Cold flexibility, EN 495-5	°C	-10

# NORDBLACK

► APPLICATION DATA AND FINAL PERFORMANCES	UoM	Value
Crack-bridging capacity at -10°C, with NYCON F reinforcement, thickness 1.1 mm, EN 14891 – A.8.2	mm	1,1 ± 0,1
Crack-bridging capacity at 0°C, with NYCON F reinforcement, thickness 1.1 mm, EN 14891 – A.8.2	mm	3,7 ± 0,5
Crack-bridging capacity at +10°C, with NYCON F reinforcement, thickness 1.1 mm, EN 14891 – A.8.2	mm	4,4 ± 0,2
Peel strength at 180° (180° peeling) on concrete, EN 28510-2	N	30 ± 5

## Storage of the product

- 24 months in the closed original packaging, in a dry and covered place away from direct sunlight, at a temperature between +5°C and +35°C.
- Protect the product against frost.

## Packages

VARIANT	PACKAGE	ADR	PACKAGES PER PALLET	COMPONENTS
-	fustino da 5 kg	NO	72 fustini	
-	fustino da 16 kg	NO	33 fustini	

Legenda ADR:  
NO = merce NON PERICOLOSA

## LEGAL NOTES

Advice on how to use our products corresponds to the current state of our knowledge and does not involve the assumption of any guarantee and / or responsibility for the final result of the work. They do not refore exempt the customer from the responsibility of verifying the suitability of the products for the use and the prefixed purposes through preventive tests. The website [www.nordresine.com](http://www.nordresine.com) contains the latest revision of this datasheet.

## EDITION

Issue date: 21.03.2013

Revision: 20.03.2018